

OrderNo:
CustomerNo: 1010036

Valnesfjord IL -Ski

TRIMTEX

Trimtex contact: Per Egil Bjørgen
Designer: Anny Drobet
Last correction: 12.09.2022

Colours in design:

MIDNIGHT BLUE	-----
T White	-----
T03 Red	-----
-----	-----

Additional info:
NEW

C19.2-L RUN SINGLET MEN
thread: Black 9700
flatlock: Black 9700



C18.2-L RUN SINGLET WOMEN
thread: Black 9700
flatlock: Black 9700



C51.2-LVZ/SS RUN T-SHIRT SS MEN
C52.2-LVZ/SS RUN T-SHIRT SS WOMEN
thread: Black 9700
flatlock: Black 9700



B237-L RUN 2.0 SHORT TIGHTS MEN
thread: Black 9700
flatlock: Black U9500



DISCLAIMER: Order is produced according to the latest approved design proof. Customers responsibility is to ensure that logo(s) and color(s) are accurate. Colors may appear different on your screen or printed paper. Colors may have $\pm 5\% \Delta E \leq$ (CIE 2000), compared to different materials and tints. For a particular result ask colortest from your sales representative. Design proof is based on L sized garment, design may vary with each size. We highly recommend to avoid continuity of design between two different part of product - Trimtex will not guarantee perfect result for this. Copyright © Designs are property of Trimtex, protected by copyright and allowed to use only on Trimtex products.

OrderNo:
CustomerNo: 1010036

Valnesfjord IL -Ski

TRIMTEX

Trimtex contact: Per Egil Bjørgen
Designer: Anny Drobet
Last correction: 12.09.2022

Colours in design:	
MIDNIGHT BLUE	-----
T White	-----
T03 Red	-----
-----	-----

Additional info:
NEW

DISCLAIMER: Order is produced according to the latest approved design proof. Customers responsibility is to ensure that logo(s) and color(s) are accurate. Colors may appear different on your screen or printed paper. Colors may have $\pm 5\% \Delta E \leq$ (CIE 2000), compared to different materials and tints. For a particular result ask colortest from your sales representative. Design proof is based on L sized garment, design may vary with each size. We highly recommend to avoid continuity of design between two different part of product - Trimtex will not guarantee perfect result for this. Copyright © Designs are property of Trimtex, protected by copyright and allowed to use only on Trimtex products.

B337-L RUN 2.0 SHORT TIGHTS WOMEN
thread: Black 9700
flatlock: Black U9500



C226-L LEAD SHORTS MEN
thread: Black 9700



C6013 LEAD 2.0 SHORTS WOMEN
thread: Black 9700



B239-LVZ-SZ RUN 2.0 LONG TIGHTS MEN
zippers + reflex piping: Black 580
thread: Black 9700
flatlock: Black U9500



OrderNo:
CustomerNo: 1010036

Valnesfjord IL -Ski

TRIMTEX

Trimtex contact: Per Egil Bjørgen
Designer: Anny Drobet
Last correction: 12.09.2022

Colours in design:	
MIDNIGHT BLUE	-----
T White	-----
T03 Red	-----
-----	-----

Additional info:
NEW

B339-LVZ-SZ RUN 2.0 LONG TIGHTS WOMEN
zippers + reflex piping: Black 580
thread: Black 9700
flatlock: Black U9500



C220-L LEAD SKINSUIT
zipper: Black 580
thread: Black 9700
flatlock: Black U9500



M2002 CORE ULTRALIGHT SHIRT SS MEN
M2003 CORE ULTRALIGHT SHIRT SS WOMEN
NB: MESH ON BACK – SMALL LOGOS OR DESIGN DETAILS MAY NOT BE VISIBLE!
thread: Black 9700
flatlock: Black 9700



M1002 CORE ULTRALIGHT SHIRT LS MEN
M1003 CORE ULTRALIGHT SHIRT LS WOMEN
NB: MESH ON BACK – SMALL LOGOS OR DESIGN DETAILS MAY NOT BE VISIBLE!
thread: Black 9700
flatlock: Black 9700



DISCLAIMER: Order is produced according to the latest approved design proof. Customers responsibility is to ensure that logo(s) and color(s) are accurate. Colors may appear different on your screen or printed paper. Colors may have $\pm 5\% \Delta E \leq$ (CIE 2000), compared to different materials and tints. For a particular result ask colortest from your sales representative. Design proof is based on L sized garment, design may vary with each size. We highly recommend to avoid continuity of design between two different part of product - Trimtex will not guarantee perfect result for this. Copyright © Designs are property of Trimtex, protected by copyright and allowed to use only on Trimtex products.

OrderNo:
CustomerNo: 1010036

Valnesfjord IL -Ski

TRIMTEX

Trimtex contact: Per Egil Bjørgen
Designer: Anny Drobet
Last correction: 12.09.2022

Colours in design:

MIDNIGHT BLUE	-----
T White	-----
T03 Red	-----
-----	-----

Additional info:
NEW

M5002 CORE ULTRALIGHT TIGHTS MEN
flatlock: Black 9700



M5003 CORE ULTRALIGHT TIGHTS WOMEN
flatlock: Black 9700



C1010 ACE RACESHIRT LS MEN

C1011 ACE RACESHIRT LS WOMEN

NB: MESH ON BACK – SMALL LOGOS OR DESIGN DETAILS MAY NOT BE VISIBLE!

zipper: Black 580
silicone band: Black
thread: Black 9700
flatlock: Black 9700



C5010 ACE RACETIGHTS MEN

thread: Black 9700

flatlock: Black 9700



DISCLAIMER: Order is produced according to the latest approved design proof. Customers responsibility is to ensure that logo(s) and color(s) are accurate. Colors may appear different on your screen or printed paper. Colors may have $\pm 5\% \Delta E \leq$ (CIE 2000), compared to different materials and tints. For a particular result ask colortest from your sales representative. Design proof is based on L sized garment, design may vary with each size. We highly recommend to avoid continuity of design between two different part of product - Trimtex will not guarantee perfect result for this. Copyright © Designs are property of Trimtex, protected by copyright and allowed to use only on Trimtex products.

OrderNo:
CustomerNo: 1010036

Valnesfjord IL -Ski

TRIMTEX

Trimtex contact: Per Egil Bjørgen
Designer: Anny Drobet
Last correction: 12.09.2022

Colours in design:

MIDNIGHT BLUE	-----
T White	-----
T03 Red	-----
-----	-----

Additional info:
NEW

DISCLAIMER: Order is produced according to the latest approved design proof. Customers responsibility is to ensure that logo(s) and color(s) are accurate. Colors may appear different on your screen or printed paper. Colors may have $\pm 5\% \Delta E \leq$ (CIE 2000), compared to different materials and tints. For a particular result ask colortest from your sales representative. Design proof is based on L sized garment, design may vary with each size. We highly recommend to avoid continuity of design between two different part of product - Trimtex will not guarantee perfect result for this. Copyright © Designs are property of Trimtex, protected by copyright and allowed to use only on Trimtex products.

C5011 ACE RACETIGHTS WOMEN
thread: Black 9700
flatlock: Black 9700



C4002 ACE 2.0 RACESUIT MEN
NB: MESH ON BACK – SMALL LOGOS OR DESIGN DETAILS MAY NOT BE VISIBLE!
zipper 2-way: Black 580
thread: Black 9700
flatlock: Black 9700



C4003 ACE 2.0 RACESUIT WOMEN
NB: MESH ON BACK – SMALL LOGOS OR DESIGN DETAILS MAY NOT BE VISIBLE!
zipper: Black 580
thread: Black 9700
flatlock: Black 9700



C1014 VISION 3.0 RACESHIRT LS MEN
C1015 VISION 3.0 RACESHIRT LS WOMEN
zipper: Black 580
silicone band: Black
thread: Dark gray 9686
flatlock: Red 3822



OrderNo:
CustomerNo: 1010036

Valnesfjord IL -Ski

TRIMTEX

Trimtex contact: Per Egil Bjørgen
Designer: Anny Drobet
Last correction: 12.09.2022

Colours in design:	
MIDNIGHT BLUE	-----
T White	-----
T03 Red	-----
-----	-----

Additional info:
NEW

C5014 VISION 3.0 RACETIGHTS MEN
C5015 VISION 3.0 RACETIGHTS WOMEN
thread: Navy 7988
flatlock: Navy 7988



C4014 VISION 3.0 RACESUIT MEN
zipper 2-way: Black 580
thread: Black 9700
flatlock: Black 9700



C4015 VISION 3.0 RACESUIT WOMEN
zipper: Black 580
thread: Black 9700
flatlock: Black 9700



C1006 FLEX 2.0 HOODIE MEN
C1007 FLEX 2.0 HOODIE WOMEN
NB! Note that hood may cover logos on upper back!
front zipper: Black 580
thread: Black 9700
flatlock: Black 9700



DISCLAIMER: Order is produced according to the latest approved design proof. Customers responsibility is to ensure that logo(s) and color(s) are accurate. Colors may appear different on your screen or printed paper. Colors may have $\pm 5\% \Delta E \leq$ (CIE 2000), compared to different materials and tints. For a particular result ask colortest from your sales representative. Design proof is based on L sized garment, design may vary with each size. We highly recommend to avoid continuity of design between two different part of product - Trimtex will not guarantee perfect result for this. Copyright © Designs are property of Trimtex, protected by copyright and allowed to use only on Trimtex products.

OrderNo:
CustomerNo: 1010036

Valnesfjord IL -Ski

TRIMTEX

Trimtex contact: Per Egil Bjørgen
Designer: Anny Drobet
Last correction: 12.09.2022

Colours in design:	
MIDNIGHT BLUE	-----
T White	-----
T03 Red	-----
-----	-----

Additional info:
NEW

A190-L ACE JACKET MEN
A191-L ACE JACKET WOMEN
Design matching not possible over different details!
front/pocket zippers: Black 580
thread: Black 9700



A194-L ACE VEST MEN
A195-L ACE VEST WOMEN
Design matching not possible over different details!
front/pocket zippers: Black 580
edgeband: Black
thread: Black 9700



A192-L ACE PANTS MEN
A193-L ACE PANTS WOMEN
pocket/side zippers: Black 580
thread: Black 9700



A1002 PULSE 2.0 JACKET MEN
A1003 PULSE 2.0 JACKET WOMEN
front/pocket zippers: Black 580
elastic panels: Black
thread: Black 9700



DISCLAIMER: Order is produced according to the latest approved design proof. Customers responsibility is to ensure that logo(s) and color(s) are accurate. Colors may appear different on your screen or printed paper. Colors may have $\pm 5\% \Delta E \leq$ (CIE 2000), compared to different materials and tints. For a particular result ask colortest from your sales representative. Design proof is based on L sized garment, design may vary with each size. We highly recommend to avoid continuity of design between two different part of product - Trimtex will not guarantee perfect result for this. Copyright © Designs are property of Trimtex, protected by copyright and allowed to use only on Trimtex products.

OrderNo:
CustomerNo: 1010036

Valnesfjord IL -Ski

TRIMTEX

Trimtex contact: Per Egil Bjørgen
Designer: Anny Drobet
Last correction: 12.09.2022

Colours in design:	
MIDNIGHT BLUE	-----
T White	-----
T03 Red	-----
-----	-----

Additional info:
NEW

A5002 PULSE 2.0 PANTS MEN
A5003 PULSE 2.0 PANTS WOMEN
pocket/side zippers: Black 580
solid fabric: Black
thread: Black 9700
transfer: TS-90-1 reflex stripes



A1006 TRAINER 2.0 JACKET MEN
A1007 TRAINER 2.0 JACKET WOMEN
front zipper + reflex: Black 580
pocket zippers: Black 580
cuffs: Black
elastic side panels: Black
elastic sleeve panels: Black
thread: Black 9700



A3002 PULSE 2.0 VEST MEN
A3003 PULSE 2.0 VEST WOMEN
front/pocket zippers: Black 580
solid fabric: Black
edgeband: Black
thread: Black 9700



A5006 TRAINER 2.0 PANTS MEN
A5007 TRAINER 2.0 PANTS WOMEN
zippers: Black 580
solid fabric: Black
thread: Black 9700
transfer: TS-90-1 reflex stripes



DISCLAIMER: Order is produced according to the latest approved design proof. Customers responsibility is to ensure that logo(s) and color(s) are accurate. Colors may appear different on your screen or printed paper. Colors may have $\pm 5\% \Delta E \leq$ (CIE 2000), compared to different materials and tints. For a particular result ask colortest from your sales representative. Design proof is based on L sized garment, design may vary with each size. We highly recommend to avoid continuity of design between two different part of product - Trimtex will not guarantee perfect result for this. Copyright © Designs are property of Trimtex, protected by copyright and allowed to use only on Trimtex products.

OrderNo:
CustomerNo: 1010036

Valnesfjord IL -Ski

TRIMTEX

Trimtex contact: Per Egil Bjørgen
Designer: Anny Drobet
Last correction: 12.09.2022

Colours in design:	
MIDNIGHT BLUE	-----
T White	-----
T03 Red	-----
-----	-----

Additional info:
NEW

A6002 PULSE 2.0 SHORTS MEN
A6003 PULSE 2.0 SHORTS WOMEN
pocket zippers: Black 580
side zippers + reflex: Black 580
solid fabric: Black



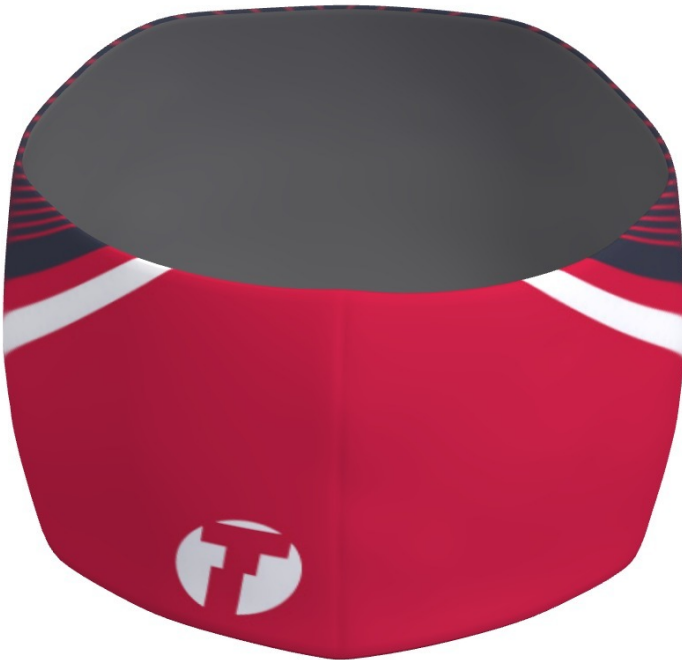
S25 STORM DOWN 500 JACKET MEN Sky blue
S26 STORM DOWN 500 JACKET WOMEN Skyblue
TRANSFER LOGOS
VP20-1007
VP20-1008
thread: Sky blue 7342



S25 STORM DOWN 500 JACKET MEN Black
S26 STORM DOWN 500 JACKET WOMEN Black
TRANSFER LOGOS
VP20-1003
VP20-1004
thread: Black 9700



B245-L PULSE MERINO HEADBAND



DISCLAIMER: Order is produced according to the latest approved design proof. Customers responsibility is to ensure that logo(s) and color(s) are accurate. Colors may appear different on your screen or printed paper. Colors may have $\pm 5\% \Delta E \leq$ (CIE 2000), compared to different materials and tints. For a particular result ask colortest from your sales representative. Design proof is based on L sized garment, design may vary with each size. We highly recommend to avoid continuity of design between two different part of product - Trimtex will not guarantee perfect result for this. Copyright © Designs are property of Trimtex, protected by copyright and allowed to use only on Trimtex products.

OrderNo:
CustomerNo: 1010036

Valnesfjord IL -Ski



Trimtex contact: Per Egil Bjørgen
Designer: Anny Drobet
Last correction: 12.09.2022

Colours in design:

MIDNIGHT BLUE	-----
T White	-----
T03 Red	-----
-----	-----

Additional info:
NEW

B256.1-L PULSE MERINO CAP
thread: Red 3822



DISCLAIMER: Order is produced according to the latest approved design proof. Customers responsibility is to ensure that logo(s) and color(s) are accurate. Colors may appear different on your screen or printed paper. Colors may have $\pm 5\% \Delta E \leq$ (CIE 2000), compared to different materials and tints. For a particular result ask colortest from your sales representative. Design proof is based on L sized garment, design may vary with each size. We highly recommend to avoid continuity of design between two different part of product - Trimtex will not guarantee perfect result for this. Copyright © Designs are property of Trimtex, protected by copyright and allowed to use only on Trimtex products.